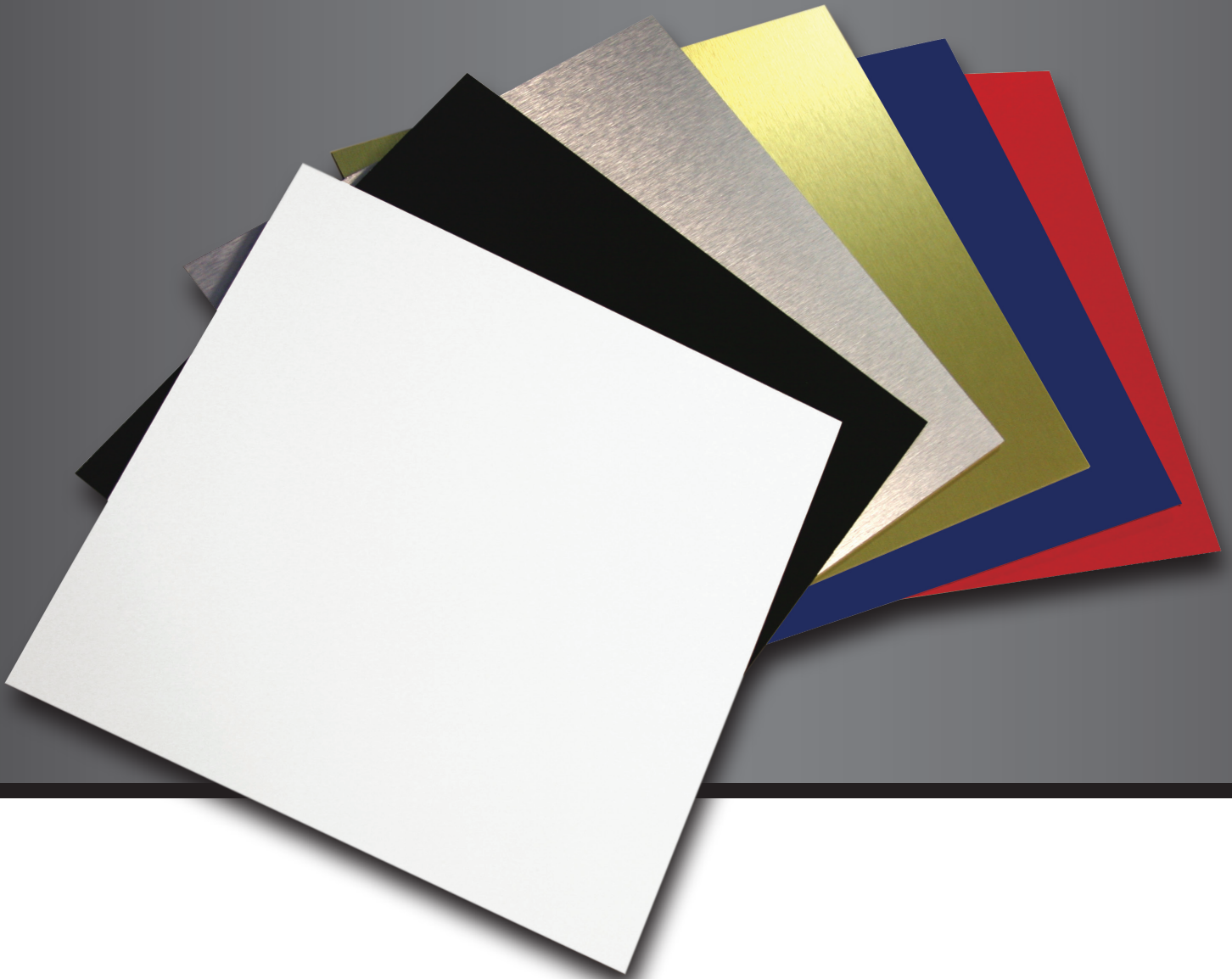


# NUDO®

YOUR VISION IS OUR MISSION™



## Professional Sign Panels

FOR INTERIOR & EXTERIOR APPLICATIONS

# PolyMetal™

PolyMetal is a flat, durable and moisture resistant Class A fire-rated panel. Optimal for direct digital printing, bending and routing, PolyMetal is the ideal sign panel for both interior and exterior signage.

## Color\*\*

White, Almond, Yellow, Red, Blue, Green, Black, Mirror\*, Brushed Silver\*, Brushed Gold\*, Brushed Bronze\*, Brushed Copper\*, Copper  
Custom colors available with minimum order.

## Quantity

No minimums on stocked colors

## Thickness

3mm and 6mm, single and double sided available

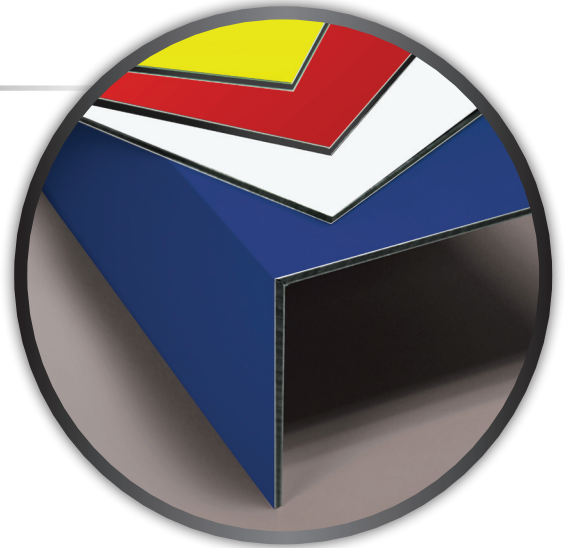
## Size

4' x 8', 4' x 10', 5' x 10'

**Pre-routed panels are also available**

**UL-Listed** 

\*For interior use only. \*\*Not all colors available in all sizes.



# ValuMetal™

ValuMetal is a lightweight aluminum, double-sided, white sign panel. A great cost effective solution for interior or exterior sign panels.

## Color

White

## Quantity

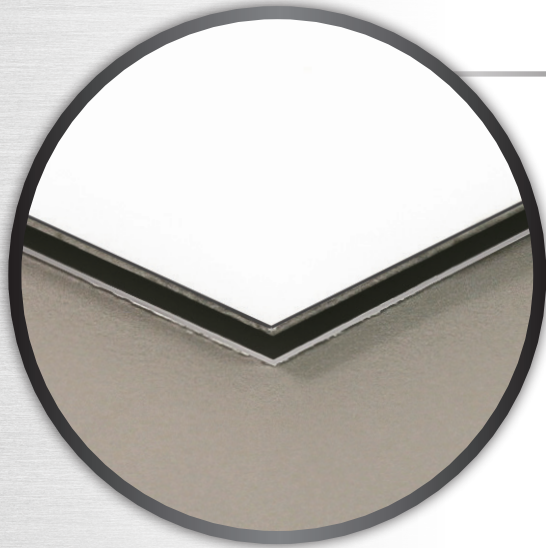
No minimums on stocked colors

## Thickness

3mm double sided only

## Size

4' x 8'



# NuAlum™

NuAlum is an aluminum face overlay (single or double sided), factory laminated to exterior grade plywood. No prep time needed.

## Color

White, Blue, Black, Bronze

## Quantity

No minimums on stocked colors


## Thickness

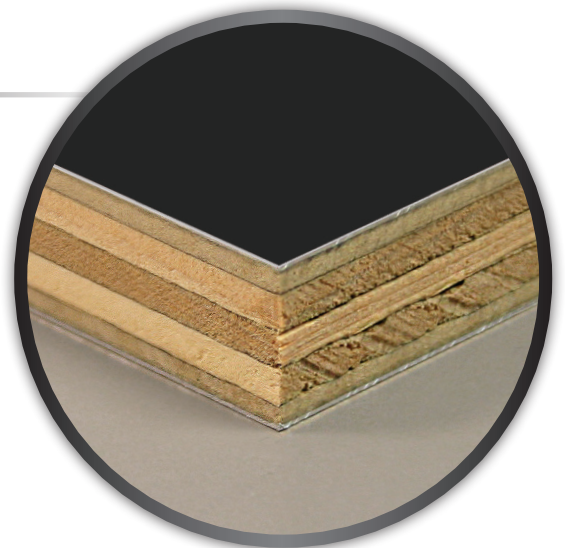
.500"

Additional substrate thicknesses are available

## Size

4' x 8', 4' x 10'

**UL-Listed** (double sided only) 



# AlumaCorr™

AlumaCorr is an innovative and affordable corrugated vinyl core sign panel. It is lightweight and durable, with finished aluminum on both sides. Perfect for exterior post and panel installation as it will not corrode or rust.

**Color**

White, Blue, Black, Bronze

**Quantity**

No minimums on stocked colors

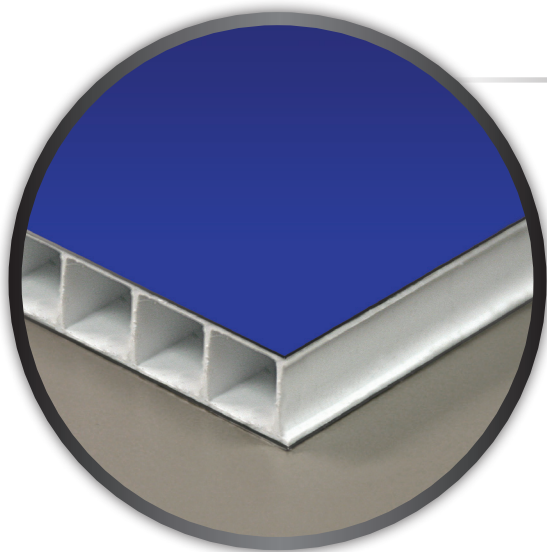
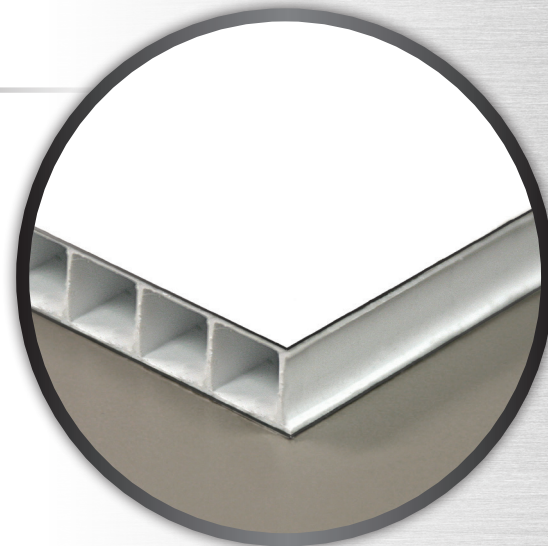
**Thickness**

5mm and 10mm, single and double sided available

**Size**

4' x 8', 4' x 10', 4' x 12', 5' x 8', 5' x 10'

UL-Listed 



# EconoCorr™

EconoCorr is a corrugated vinyl core sign panel with a painted aluminum finish on one side and a mill finish backer for single sided applications.

**Color**

White, Blue, Black, Bronze

**Quantity**

No minimums on stocked colors

**Thickness**

5mm, 10mm single sided only

**Size**

4' x 8', 4' x 10'

UL-Listed 

# WhiteWood™

A smooth, durable, white, vinyl surface factory laminated to exterior grade plywood (single or double sided). Ready for hand or screen lettering.

**Color**

White

**Quantity**

No minimums on stocked colors

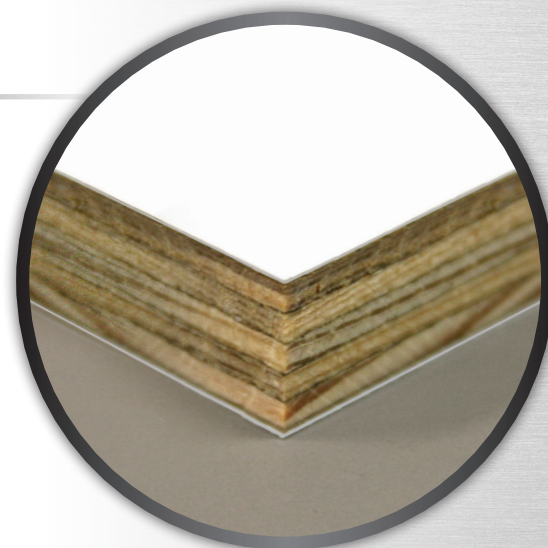
**Thickness**

.500"

Additional substrate thicknesses are available

**Size**

4' x 8', 4' x 10'



# QUICK REFERENCE GUIDE

	PolyMetal	ValuMetal	AlumaCorr	EconoCorr	NuAlum	WhiteWood
<b>Description</b>	Recycled thermoplastic core sandwiched between two sheets of aluminum	Recycled thermoplastic core sandwiched between two sheets of white aluminum	Corrugated/fluted polypropylene copolymer with aluminum on both sides	Corrugated polypropylene core with aluminum on both sides	Aluminum face laminated to exterior grade plywood	Smooth vinyl face laminated to exterior grade substrate
<b>Substrate</b>	Recycled thermoplastic core	Recycled thermoplastic core	Corrugated/fluted polypropylene copolymer	Corrugated polypropylene	Plywood	Exterior grade substrates
<b>Available Fire Rating</b>	Class A	None	Class A	Class A	Class A (double sided only)	None
<b>Certifications</b>	UL-Listed	None	UL-Listed	UL-Listed	UL-Listed (double sided only)	None
<b>Printing Options</b>	Digitally printable	Digitally printable with most inks	Digitally printable	Digitally printable	Accepts standard sign paints, inks and vinyl graphics	Accepts standard sign paints, inks and vinyl graphics

## IT'S ABOUT YOU

At Nudo, it's more about you than us. We are customer-focused and that means you can expect the responsiveness, consistency and solutions you need.

### Responsiveness

- With over 60 years of experience, we understand the demands and expectations of the building, architecture, transportation and sign industries.
- Our goal is to make things easy for you, and that means a simple ordering process, fast turn times and our own transportation network that allows us to provide industry leading, on-time delivery on a dedicated truck.
- Our customer satisfaction score is the highest in our industry and a true testament to our understanding that you need answers quickly.



### Consistency

- With an on-time delivery rate of 99% and a return rate of less than 0.2%, we stand behind our products and stand firm on 100% customer satisfaction - period!
- We are rated as having the best service in the industry by an independent assessment.
- We know trust is earned and can never be taken for granted. From the first order and every subsequent one after that, you can depend on us to deliver the right product at the right price at the right time.

### Solutions

- We know that one size doesn't fit all. We address the variables that are inevitably present in any project and use our knowledge to provide you with product options that best suit your needs.
- Couple our wide variety of inner layer options, surface materials, substrates, thicknesses, sizes and colors with our specialized manufacturing equipment and extensive stocking level of raw materials and we can provide custom solutions for just about any panel need.

# NUDO®

YOUR VISION IS OUR MISSION™

1500 Taylor Avenue  
Springfield, IL 62703  
www.Nudo.com

Ph: 800.826.4132  
Fax: 217.528.8722

Rev 07/19

Visit [www.Nudo.com](http://www.Nudo.com) or  
contact our local dealer for details.